



# Preserving our Lands, Protecting our Waters



The Benton Soil & Water Conservation District (SWCD) along with the Sherburne SWCD, would like to help improve your land for water quality and soil health.

Through a Clean Water Fund grant, we are offering FREE voluntary property assessments within both counties; specifically targeting areas affecting the Elk River, Mayhew Lake, and Big Elk Lake Watersheds. Our goal is to work together with property owners to reduce the amounts of nutrients entering our watersheds as well as improve their residence, farm, or cropland. Some practices available are:

- Erosion control for cropland
- Managing feedlot runoff & installing manure storage (filter strips, diversions, manure pits, stacking slabs, etc.)
- Manure composting for horses, poultry, and other livestock
- Rotational grazing systems
- Cover crops
- Sealing abandoned wells
- Shoreline restoration and stabilization
- Irrigation water management
- Native buffers
- Wetland Restorations

Whether you own one acre or 1,000 acres, we are available to assist you with a wide variety of conservation projects!

Below are some projects we have already assisted landowners with in Benton & Sherburne Counties.

### Wetland Restoration

#### Cover Crops



#### Managed Grazing System



### Manure Pit & Stacking Slab



#### Roofed Stacking Slab with Animal Mortality Composter



#### Manure Composter



Each of these practices temporarily stores waste such as manure, wastewater, and other contaminated runoff. This way the farmer is able to apply the manure as needed while simultaneously preventing waste from getting into water sources.

#### Before



#### After



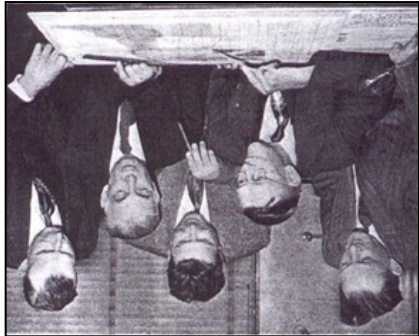
### Terrace/Water & Sediment Control Basin

These practices are established by creating an earth embankment, or a combination ridge and channel, constructed across the field slope. It helps reduce erosion by reducing slope length, and retain runoff by absorbing excess moisture.

All programs and services are available without the regard to race, color, national origin, sex, religion, age, disability, political beliefs, and marital or family status.

Benton County Soil & Water Conservation District - 14 2nd Avenue West Foley, MN 56329 - (320) 968-5300 ext.3 - [www.soilandwater.org](http://www.soilandwater.org)





**Financial assistance available!  
Convenient planning assistance for your  
environmental and conservation needs!**

**Take advantage of this GREAT  
opportunity inside!**

Stop in our office at 14 2nd Avenue West, Foley, MN 56329  
or give us a call today at (320) 968-5300 ext. 3,  
to see what we can do for YOU!!



“The Conservation staff are very knowledgeable and their solutions to problems like erosion and feedlot runoff really work to help me as a farmer. I wish more farmers would take advantage of the opportunities they present, such as planning and funding for conservation activities. My advice to individuals is to take advantage of the assistance that is available now. There may come a time when help may no longer be available, and people, no matter if you are a farmer or not, will have no choice but to do their part without the help of the Conservation staff or funding.”

- Benton County Resident

**Why not see what we can do for you?**

There's no cost for a consultation, and no commitment to continue!