



Elk River Watershed Pollution Reduction



Clean Water Funds: 2011

Clean Water Grant	\$149,104
Leveraged Funds*	\$59,581.15
Total Project Budget	\$216,648.96

* Leveraged Funds include required 25% local match

Targeted Water:

Elk River Watershed

Project Sponsor:

Elk River Watershed Association

Partners:

Sherburne County landowners, Sherburne Soil & Water Conservation District, Sherburne County, Benton County landowners, Benton Soil & Water Conservation District, Benton County

Grant Period:

January 2011 - December 2013

Project Contact:

Francine Larson
(763) 241-1170 x131
flarson@sherburneswcd.org
www.sherburneswcd.org



Project Narrative

The Elk River Watershed Association (ERWSA) was formed to enable Sherburne and Benton Counties to work together to implement Local Water Management Plans. Since its formation in 1994, the ERWSA has primarily focused on working with land owners to reduce non-point sources of pollution within the watershed.

The Elk River Watershed is located within the Source Water Protection Area for St. Paul and Minneapolis. The Elk River flows into the Mississippi River approximately 25 miles upstream to the St. Paul and Minneapolis Mississippi River intakes. Therefore, land use activities and decisions within the Elk River Watershed directly influence the quality of the source water arriving at the water intakes of the two cities.

ERWSA has commitments from cooperators to install land treatment projects that will result in a significant reduction in pollution to both high priority protected and impaired waters. Projects include shoreland restoration, stormwater treatment, manure management and a wetland creation. All activities identified will reduce bacteria, turbidity and nutrients which ultimately enter the Mississippi.

Actual Outcomes

We installed three stormwater treatment practices, one stream bank stabilization, eight shoreline restoration/protection projects and 22 nutrient management test plots.





Russell's Bio-retention Basin

Elk River Watershed Pollution Reduction

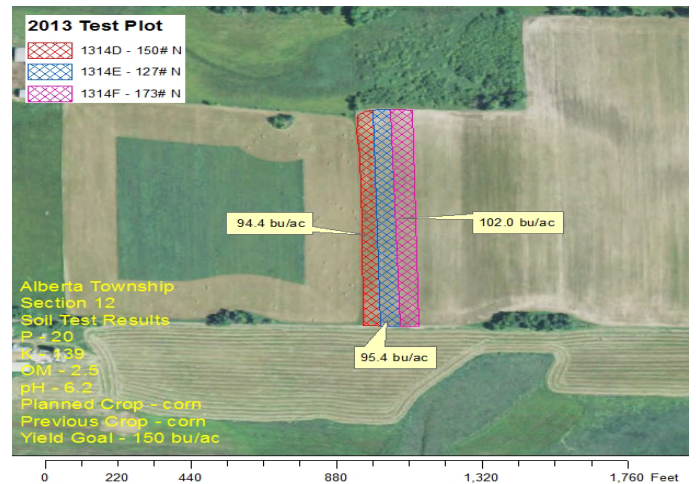


Ziegler Streambank Protection



Fobbe Shoreline Restoration

2013 BMP Test Plot Results



Benton County Test Plots

Pollution Reduction Summary	(estimated)
Phosphorus (lbs./yr.)	1,224.99
Nitrogen (lbs./yr.)	3,052
Soil (tons/yr)	30
Sediment (tons/yr)	31

BMP Summary	Total Size
Shoreline and Streambank Protection (LnFt)	1,465
Shoreline and Streambank Protection (acres)	.117
Stormwater Reduction (acres)	.07
Nutrient Management (acres)	150.7